

Identifikacija
posmatranjima u
vidljivom opsegu
emisionih maglina u
bliskim galaksijama

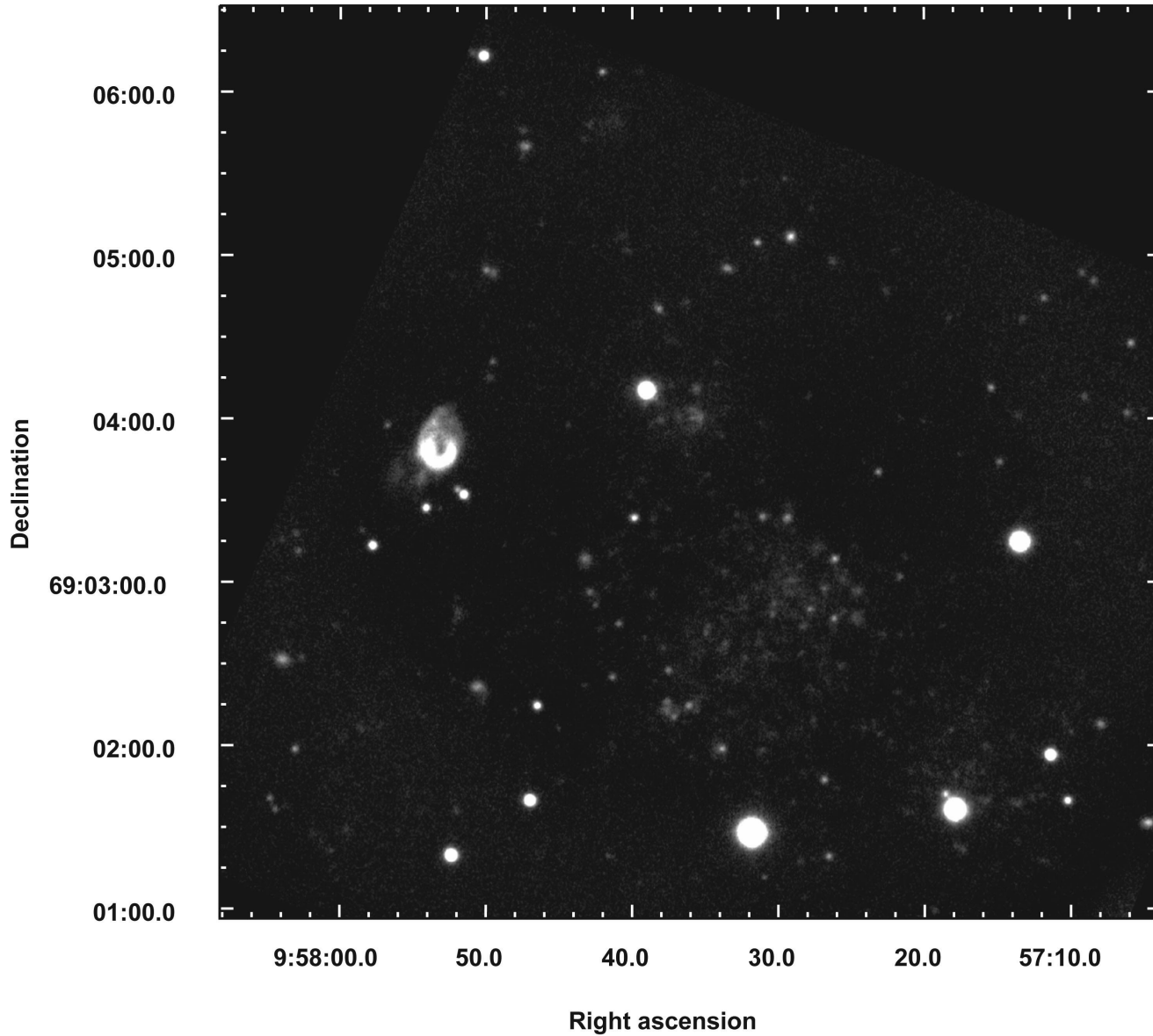
Emission nebulae

- Balmer lines - $H\alpha$
- forbidden lines - SII (HII regions or SNRs)
- Red continuum

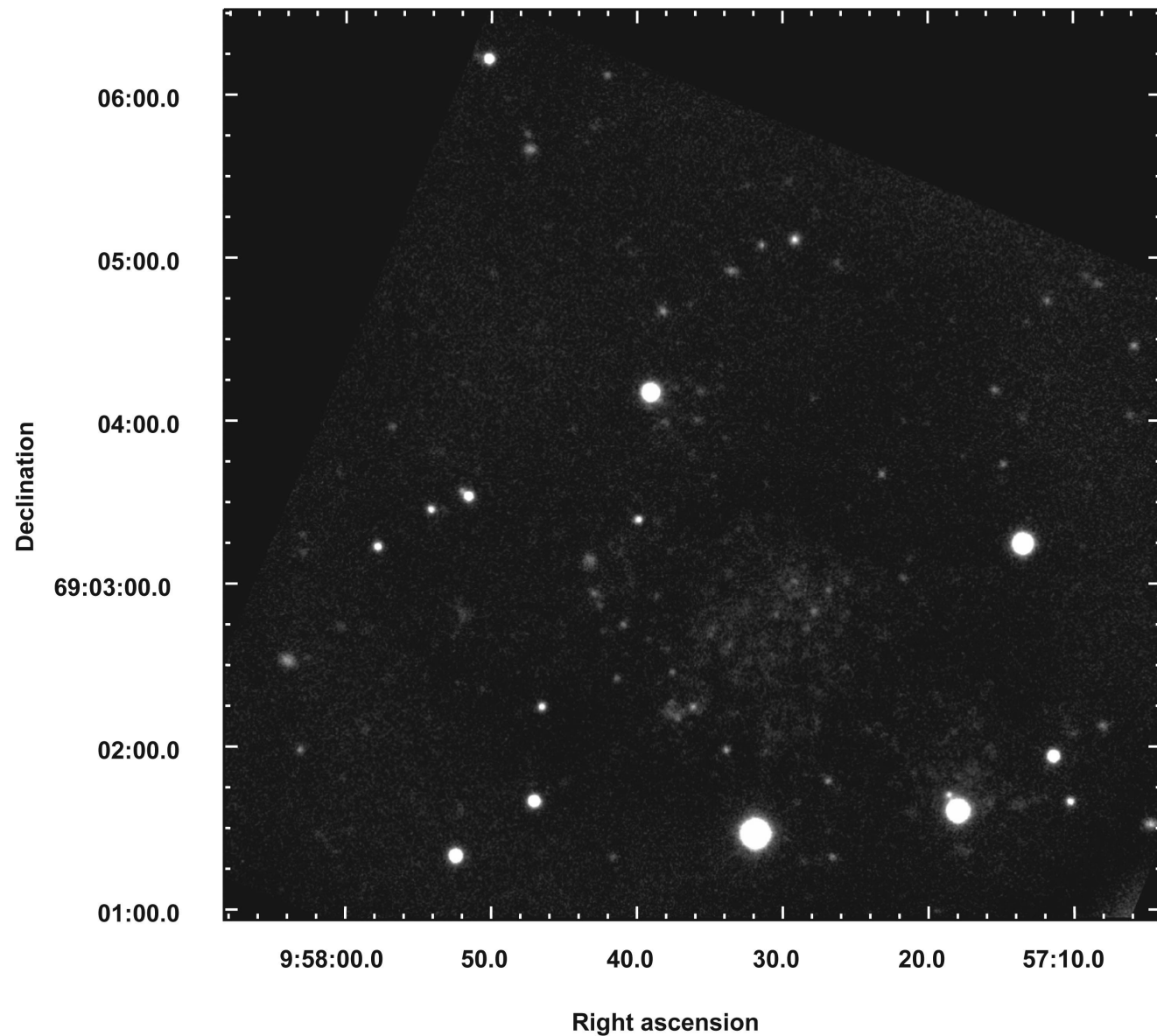
Holmberg IX

- Rožen, 2 m, 1750 mmv, the best seeing 1.5 arcsec (average 2.5 – 3 arcsec), exposition ~ 30 min

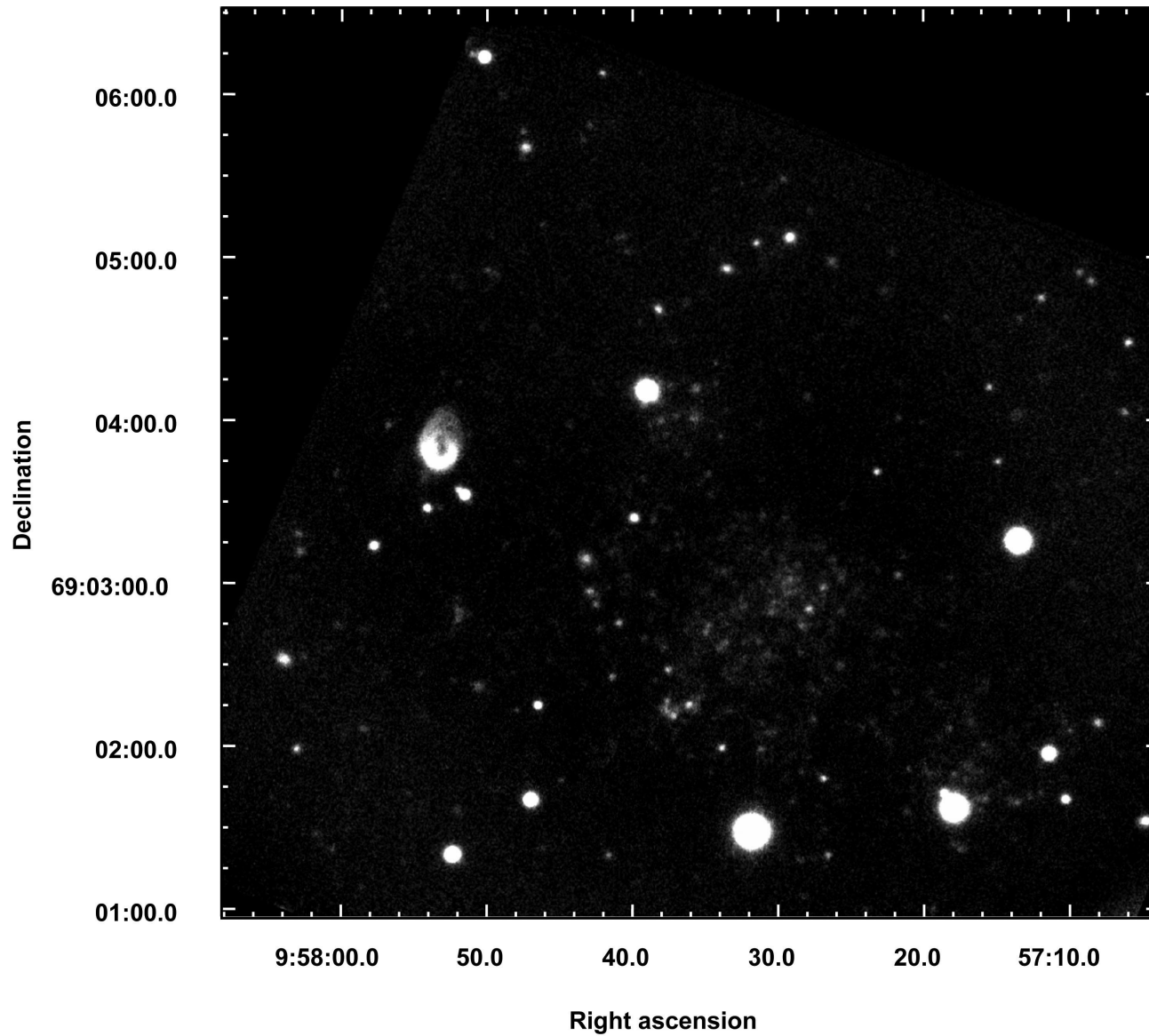
H α + continuum



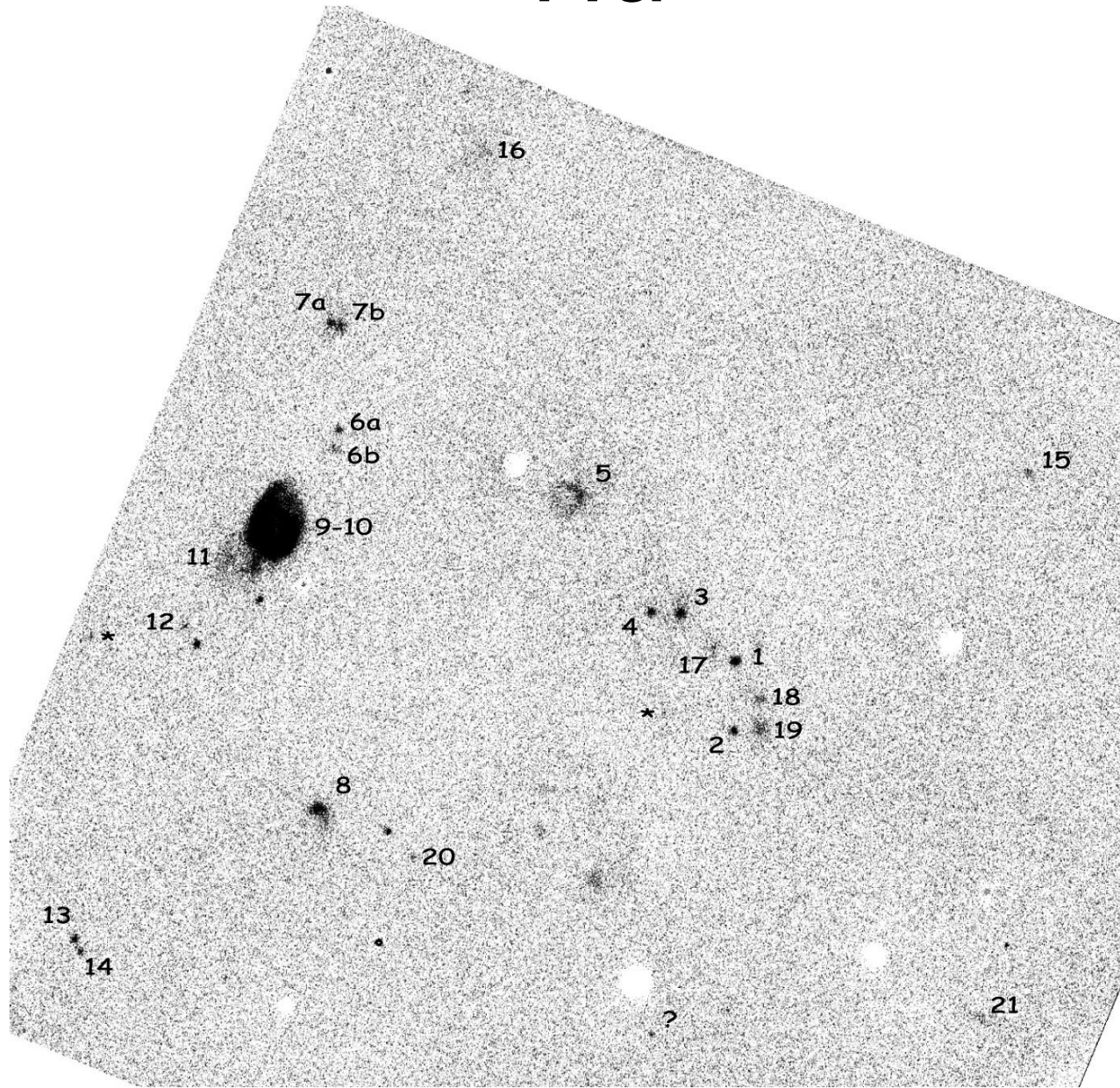
continuum



SII



H α



- Opservatorija na Vidojevici
- ~ 1.5 m, 1100 mnv
- Meteo uslovi na Roženu su prilično loši (blizina Egejskog mora – velika vlažnost, turbulentna atmosfera, blizina ski centra Pamporovo, mali broj vedrih noci...)

Hvala na pažnji!